



FMG-CB DEWATERING DOME SHELTER

FMG CLOUDBREAK MINE SITE

NPI - CONSTRUCTION

PROJECT

CB21OP044-Dewatering Workshop Dome Shelter

CLIENT

Fortescue Metals Group
 Matthew Wilson 0488 480 498

DDRIC CONTACT

Turlough O'Neil 0408 624 767

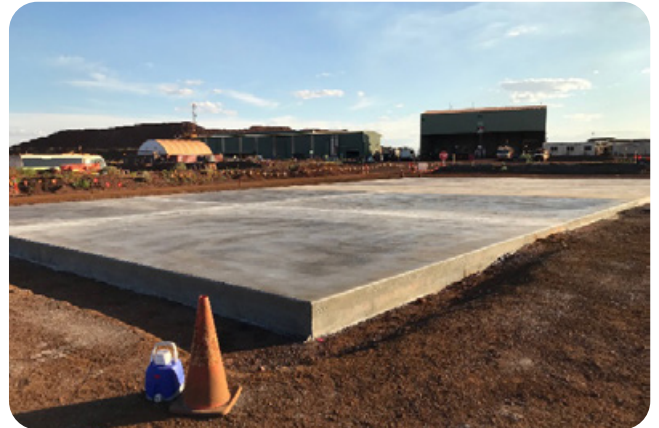
DESCRIPTION

The works performed by DDR Indigenous Contractors included:

- ▶ Groundwork preparation for concrete pad
- ▶ 100m trenching for electrical installations to the main workshop distribution board
- ▶ Surveying, set-out, & construction of reinforced concrete base slab
- ▶ Positioning and tie down of sea containers
- ▶ Construction of dome shelter structural steel
- ▶ Coded welding & NDT testing
- ▶ Dome shelter tarp installation and tensioning
- ▶ Installation of in-ground electrical & comms cabling back to main workshop distribution board
- ▶ Full electrical fit out & commissioning for dome shelter workshop
- ▶ Installation & commissioning compressor
- ▶ Installation & commissioning of 25,000 ltr water tank

HIGHLIGHTS

- ▶ Civil work & concrete construction
- ▶ Trenching & rock breaking
- ▶ In-ground electrical cabling



IMAGES (FROM TOP TO BOTTOM)

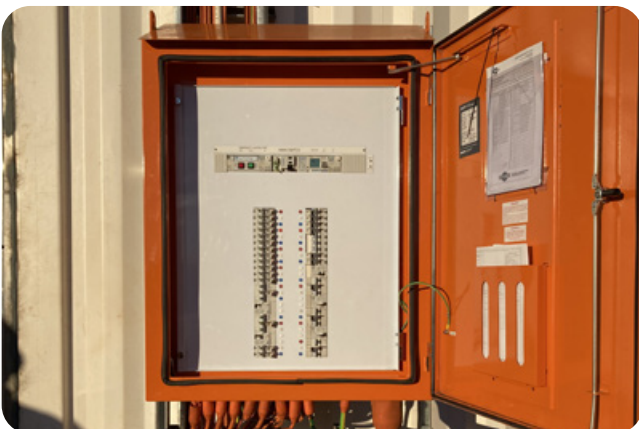
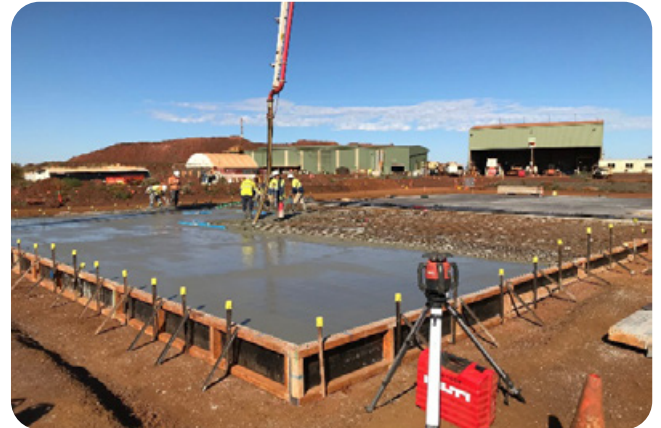
- ▶ Finished concrete slab.
- ▶ Structural steel and coded welding.
- ▶ Completed dome shelter.



FMG-CB DEWATERING DOME SHELTER

FMG CLOUDBREAK MINE SITE

NPI - CONSTRUCTION



IMAGES (FROM TOP TO BOTTOM)

- ▶ Steel fixing and form work.
- ▶ Structural steel installation.
- ▶ Electrical distribution board.

IMAGES (FROM TOP TO BOTTOM)

- ▶ Concrete placement and finishing.
- ▶ Structural steel installation.
- ▶ Electrical fitout.